



75th Anniversary
27 Oct – 3 Nov



ACTION STATIONS!

Weekend Accommodation (Blenheim/Hanmer)

We have arranged block-out reservations at several motels (see following details) for our club members who are attending this event.

To confirm your attendance, participants now need to contact their motels of choice and make their own bookings.

IMPORTANT: These motels are reserved during the month of **March only, so book promptly to avoid disappointment.**

You may of course arrange alternative accommodation if you wish.

Event Registration

Once you have booked your accommodation, please complete the on-line form by clicking this link – [75th Anniversary Registration Form](#)

Note for CLNZ members: this does not include North Island accommodation and ferry bookings. Please arrange these separately using the form sent to you via CLNZ.

Places are limited for the following main events, so it is vital that you act quickly to secure your places. Registrations will be logged in order of receipt. First come, first served!

- ***Friday – Casual dinner at Bamboo Garden Asian restaurant – maximum 120 seats available.***
- ***Saturday – Formal evening dinner at Wither Hills Winery – maximum 110 seats available.***
- ***Monday – Rodin Cars tour & buffet at Mt Lyford – maximum 80 people (this will be split into smaller groups).***



75th Anniversary
27 Oct – 3 Nov



Anniversary Weekend Event – What to expect:

- **Friday 27th** – Club Lotus crossing the Strait to meet with Southern Lotus members in **Blenheim** (2 nights).
- **Saturday 28th** – Activities & local sites, Anniversary dinner.
- **Sunday 29th** – Group car display. Relocate to **Hanmer Springs**.
- **Monday 30th** – A tour of Rodin Cars.

Coming soon... The Top-of-the-South Tour

While completing your Registration for the Anniversary weekend, please confirm if you plan to continue on the tour to the spectacular West Coast and Tasman districts (in full, or just for part of the journey).

Top-of-the-South Tour – What to expect:

- **Monday 30th** – Return to **Hanmer Springs** (2nd night).
- **Tuesday 31st** – via Lewis Pass to the **West Coast** (1 night).
- **Wednesday 1st** – via Buller Gorge to **Motueka** (2 nights).
- **Thursday 2nd** – via Takaka Hill to Collingwood, return.
- **Friday 3rd** – (CLNZ) via Nelson to Picton ferry.

We will continue to roll out event details and more information, including booking details for the Top-of-the-South tour, soon.

Organising Committee - club contacts:

Southern Lotus:		
Malcolm James	malcolm.james.slr@gmail.com	021 1744 774
AJ Williams	aj@goldtouch.co.nz	021 802 434
George & Cheryl Cottle	gandc.cottle@xtra.co.nz	027 398 6603
Club Lotus NZ:		
Heiko Jonkers	heiko.jonkers@gmail.com	021 434 565
Alan Baker	alan.okuravalleyfurniture@gmail.com	021 0231 2062



75th Anniversary 27 Oct – 3 Nov

Blenheim accommodation for Fri 27th & Sat 28th

The information below has been provided by each motel. Please follow the links to their websites to view more details and photos of each motel. You can also look on Google Maps. It is recommended you call direct to book. Telephone numbers are on the websites. Ensure you state you are part of the Lotus group.



1. Commodore Courts - Ask for Linda

<https://commcourt.co.nz/>

Queen Studio (8 units) – cost \$145 per night

These units have a queensize bed in the lounge. It has a kitchen/lounge with cooktop and microwave, table and chairs, bathroom, Smart TV with Netflix, Disney+, TVNZ+ and Freeview, heatpump/aircon and linen.

Twin studio (4 units – 2 being access units with wet floor showers) – cost \$150 per night for 2 people

These have a double and single bed in the lounge. It has a kitchen/lounge with cooktop and microwave, table and chairs, bathroom, Smart TV with Netflix, Disney+, TVNZ+ and Freeview, heatpump/aircon and linen.

Studio Spa Bath (1 unit) – cost \$160 per night

This unit has a King bed in the lounge. It has a kitchen/lounge with cooktop and microwave, table and chairs bathroom with spa bath, Smart TV with Netflix, Disney+, TVNZ+ and Freeview, heatpump/aircon and linen.

One bedroom (1 unit) - \$155 per night for 2 people

This has a queen bed in the lounge and two singles in the bedroom. It has a kitchen with cooktop and microwave, table and chairs, bathroom, Smart TV with Netflix, Disney+, TVNZ+ and Freeview, heatpump/aircon and linen.

Two bedroom (2 units) – one of these units has a full stove – cost \$170 per night for 2 people

These have a double bed in the lounge, two singles in one bedroom and two singles in the other bedroom. It has a kitchen with cooktop and microwave, table and chairs, bathroom, Smart TV with Netflix, Disney+, TVNZ on Demand and Freeview, heatpump/aircon and linen.

Two bedroom Spa (2 units) - cost \$175 per night for 2 people

These have a queen bed in one bedroom and two singles in the other bedroom. It has a kitchen with full stove and microwave, table and chairs, bathroom with spa bath, Smart TV with Netflix, Disney+, TVNZ+ and Freeview, heatpump/aircon and linen.

Any additional person costs \$20 per night



75th Anniversary
27 Oct – 3 Nov



2. Admirals - Ask for Robyn

<https://www.admirals.co.nz/>

Our units are huge, especially the one & two bedroom units, and work extremely well for groups having 2 bathrooms.

Extra person charge per night is \$25.00 per person

Cancellation and or modification is 1 month After this the full cost will be charged to the individuals credit card.

If any cars leak oil, they must put cardboard underneath.

King Studios x4

Consist of a king bed and a single bed in the same room. Maximum 3 people \$160 1-2 People per night per unit

One-bedroom unit x 3

Consist of a king bed downstairs in the lounge area bathroom downstairs. Upstairs queen bed and a single in the same bedroom and another bathroom. Maximum 5 people. \$175 for 1-2 People per night per unit

Two-bedroom unit x 5

Consist of a king bed downstairs in the lounge area and a bathroom. Upstairs queen bed in one bedroom and in the second bedroom there are 2 single beds plus another bathroom. Maximum 6 people. \$185 for 1-2 people per night per unit

Three Bedroom unit. X 1

King bed in one bedroom, Second bedroom 2 singles beds. Third bedroom queen bed. Single bed in the lounge only one bathroom. Maximum 7 people. \$185 for 1-2 People per night

Comfort Studio x 2 (One unit upstairs the other ground level)

King bed maximum 2 people \$150 per night per unit 1-2 people

Standard studios x 4 (All upstairs)

King Bed. Maximum 2 people. \$150 per night per unit 1-2 people

Ground Floor Studio

King Bed. Maximum 2 people. \$150 per night 1-2 people

3. Knightsbridge - Ask for Andrea

<https://www.theknightsbridge.co.nz/>

We have 18 rooms:

5 x Studios

10 x 1 bedroom suites

3 x 2 bedroom suites

Refer website for call or more info.

4. Two Tree Lodge - Ask for Yvonne

<https://www.twotreelodge.co.nz/>

4 x deluxe studios (king beds)

1 x 3 bedroom apartment (1 king, 2 queen), 2 bathrooms

Refer website or call for more info.



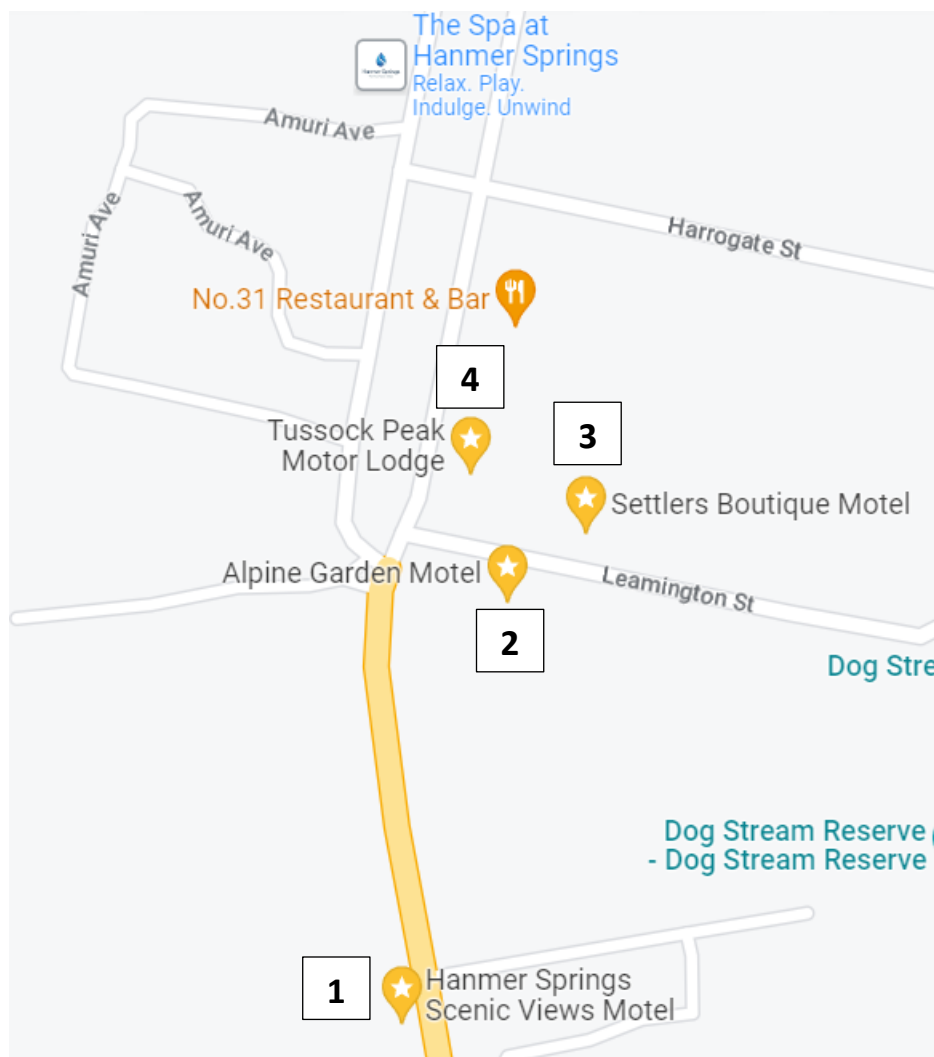
75th Anniversary
27 Oct – 3 Nov



Hanmer accommodation for Sun 29th (& Mon 30th)

The information below has been provided by each motel. Please follow the links to their websites to view more details and photos of each motel. You can also look on Google Maps. It is recommended you call direct to book. Telephone numbers are on the websites. Ensure you state you are part of the Lotus group.

Remember to book for 2 nights, unless you really have to go home 😞





75th Anniversary

27 Oct – 3 Nov

1. Scenic Views - Ask for Emma or Tony

<https://hanmerscenicviews.co.nz>

NOTE – THIS MOTEL IS HIGHLY RECOMMENDED FOR THOSE STOPPING 2 NIGHTS

We have a large BBQ which groups in the past used to chill out and relax.

Room#	Room Name	Bed Configuration	Rooms	Maximum Capacity
Unit 1	King Family Unit	1 x King bed in alcove 4 x Single beds in 2 separate bedrooms	2 bedrooms + large alcove off lounge 1 Bathroom	5 Singles or family of 6/7
Unit 2	Two Bedroom Unit	1 x Queen bed 2 x single beds	2 separate b/rooms 1 Bathroom	1 couple + 2 Singles or 3 Singles
Unit 3	Two Bedroom Unit	1 x Queen bed 2 x single beds	2 separate b/rooms 1 Bathroom	1 couple + 2 Singles or 3 Singles
Unit 4	Two Bedroom Unit	1 x Queen bed 2 x single beds	2 separate b/rooms 1 Bathroom	1 couple + 2 Singles or 3 Singles
Unit 5	Two Bedroom Unit	1 x Queen bed 2 x single beds	2 separate b/rooms 1 Bathroom	1 couple + 2 Singles or 3 Singles
Unit 6	King Family Unit	1 x King bed in alcove 4 x Single beds in 2 separate bedrooms	2 bedrooms + large alcove off lounge - 1 Bathroom	5 Singles or family of 6/7
Unit 7	Spa Bath Studio Unit	1 x King Bed	1 Studio Unit – Spa Bath Shower over bath	1 Single or 1 Couple
Unit 8	Spa Pool Suite	1 x King Bed	Spa pool on balcony (honeymoon suite)	1 single or 1 couple
Unit 9	King Studio	1 x King bed 1 x single bed	Spacious Studio Unit 1 Bathroom	1 x Couple/1 child or 2 x Singles
Unit 10	King Studio	1 x King bed 1 Single bed	Spacious Studio Unit 1 Bathroom	1 x Couple/1 child or 2 x Singles
Unit 11	King Studio	1 x King bed	Spacious Studio Unit	1 x Couple/1 child or 2 x Singles
		1 Single Bed	1 Bathroom	
Unit 12	King Studio	1 x King Bed 1 x Single Bed	Spacious Studio Unit 1 Bathroom	1 x Couple/1 child or 2 x Singles
Unit 13	King Studio	1 x King Bed 1 x Single Bed	Spacious Studio Unit 1 Bathroom	1 x Couple/1 child or 2 x Singles
Unit 14	King Studio	1 x King Bed 1 x Single Bed	Spacious Studio Unit 1 Bathroom	1 x Couple/1 child or 2 x Singles
Unit 15	King Studio	1 x King Bed 1 x Single Bed	Spacious Studio Unit 1 Bathroom	1 x Couple/1 child or 2 x Singles
Unit 16	King Studio	1 x King Bed 1 x Single Bed	Spacious Studio Unit 1 Bathroom	1 x Couple/1 child or 2 x Singles

Notes –

- Off street parking
- Units 1 -6 (family units) all have walk in showers, wheelchair accessible.
- Units 2-5 couches all pull out to a queen bed if required.
- Units 8 – 16 elevated with 4 steps.

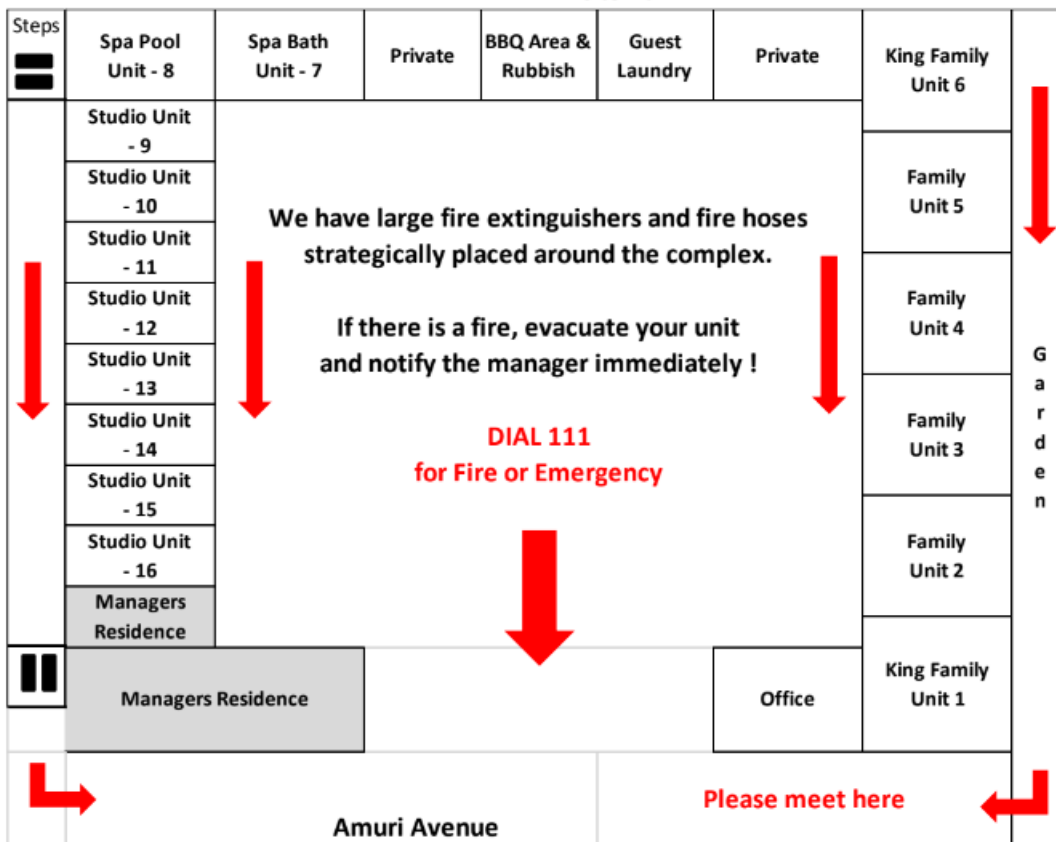


75th Anniversary
27 Oct – 3 Nov



Scenic Views Motel

Site Plan





75th Anniversary 27 Oct – 3 Nov



2. Alpine Garden - Ask for Ella	https://alpinegardenmotel.co.nz/
--	---

Our configuration is as follows:

- 4 x One-bedroom Units (queen bed & sofa bed) = \$160
- 2 x Two-bedroom Units (queen bed, sofa bed & 2x single beds) = \$210
- 3 x Studio Units (queen bed) = \$150

Refer website for more info. Your members can call us on 03 315 7332 to make their bookings individually.

3. Settlers Boutique - Ask for Brett	https://www.settlershanmer.co.nz/
---	---

Room type	Occupancy per room	No. Rooms available	Total pax per room type	Offer rate per night (net, GST incl.)
Gnd floor studio with access bathroom	2	2	4	\$165
Gnd floor studio	2	3	6	\$179
1 st floor studio with spa bath	2	3	6	\$199
1 st floor 1 bedroom apartment	2	2	4	\$215
1 st floor 1 bedroom apartment (triple - queen plus single)	3	1	3	\$220
Gnd floor 1 bedroom suite with spa bath	2	2	4	\$239
Gnd floor 2 bedroom apartment	4	4	4	\$310
			Total 31 pax	

4. Tussock Peak - Ask for Anne	https://www.tussockpeak.co.nz/
---------------------------------------	---

- 9 x studios
 - 2 x 2 bedroom units (king and single in each room)
- Mixture of upstairs and downstairs units. Refer website for more info.